

[illegible]

1	2	3	4	5	6	7	8								
<table border="1"> <tr> <td colspan="8">TABLE OF CONTENTS</td> </tr> </table>								TABLE OF CONTENTS							
TABLE OF CONTENTS															

PAGE	PAGE
1.Cover Page	28-29.DDR SODIMM
2.Index	30.LCM Conn.
3.System Block Diagram	31.ICH9-1
4.Interface block diagram	32.ICH9-2
5.Montevina Power On	33.ICH9-3
6.POWER Block Diagram	34.ICH9-4
7.Charger	35.ICH9-5
8.3A / 5A & BATT CONN	36.SATA HDD CONN
9.+V1.8 & 3S / 5S	37.WLAN & BT & 3G
10.+V1.5A & +V1.05S	38.EC
11.+V1.5S	39.K/B & TP
12.+VCC_CORE	40.IO CONN
13.+VGFX_CORE	41.USB & eSATA
14.+V5AUXON	42.LAN CONTROLLER
15.Clock Generator	43.RJ45
16.Penryn-1	44.LAN POWER
17.Penryn-2	45.PWR BTN & LED
18.Penryn-3	46.CRT
19.Penryn-4	47.G sensor
20.Thermal & FAN	48.SCREW
21.Cantiga-1	49.EMI
22.Cantiga-2	
23.Cantiga-3	
24.Cantiga-4	
25.Cantiga-5	
26.Cantiga-6	
27.Cantiga-7	

DELL CONFIDENTIAL/PROPRIETARY

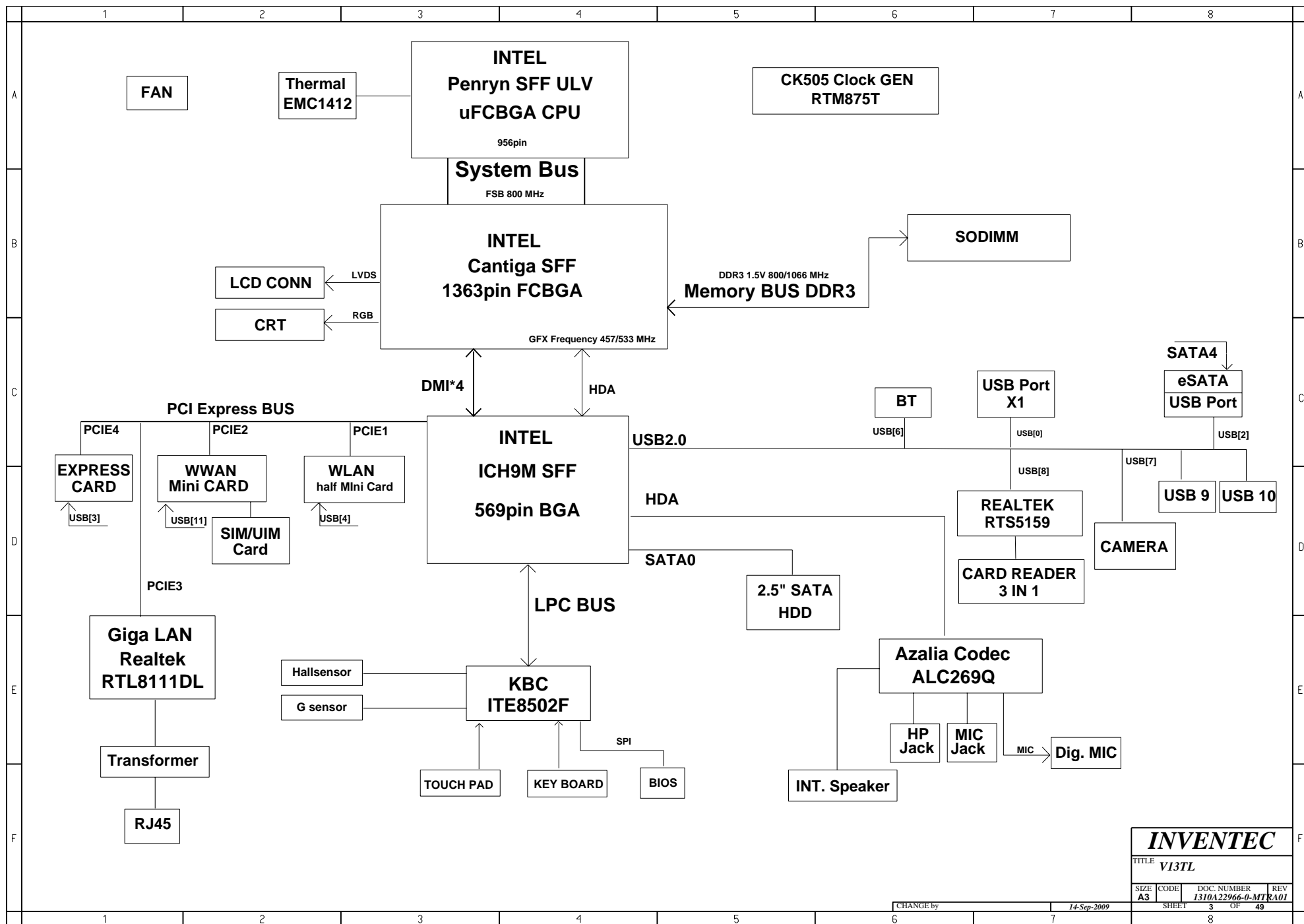
INVENTECTITLE **V13TL**

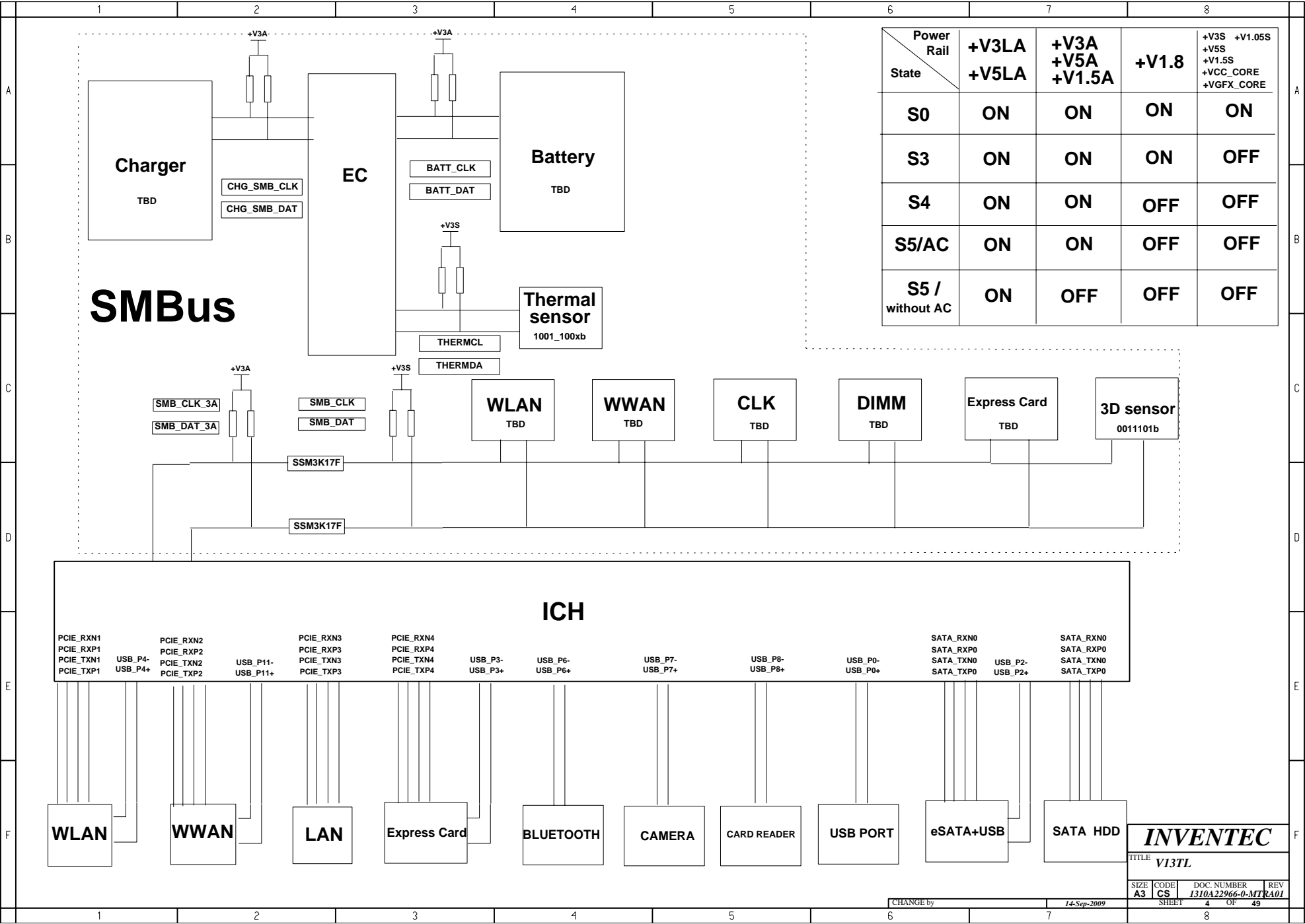
PROPRIETARY NOTE: THIS SHEET OF ENGINEERING DRAWING AND SPECIFICATIONS CONTAINS CONFIDENTIAL
 TRADE SECRET AND OTHER PROPRIETARY INFORMATION OF DELL INC. ("DELL") THIS DOCUMENT MAY NOT
 BE TRANSFERRED OR COPIED WITHOUT THE EXPRESS WRITTEN AUTHORIZATION OF DELL. IN ADDITION,
 NEITHER THIS SHEET NOR THE INFORMATION IT CONTAINS MAY BE USED BY OR DISCLOSED TO ANY THIRD
 PARTY WITHOUT DELL'S EXPRESS WRITTEN CONSENT.

SIZE	CODE	DOC. NUMBER	REV
A3	CS	1310A22966-0-MTR	RA01

CHANGE by 14-Sep-2009

SHEET 2 OF 49

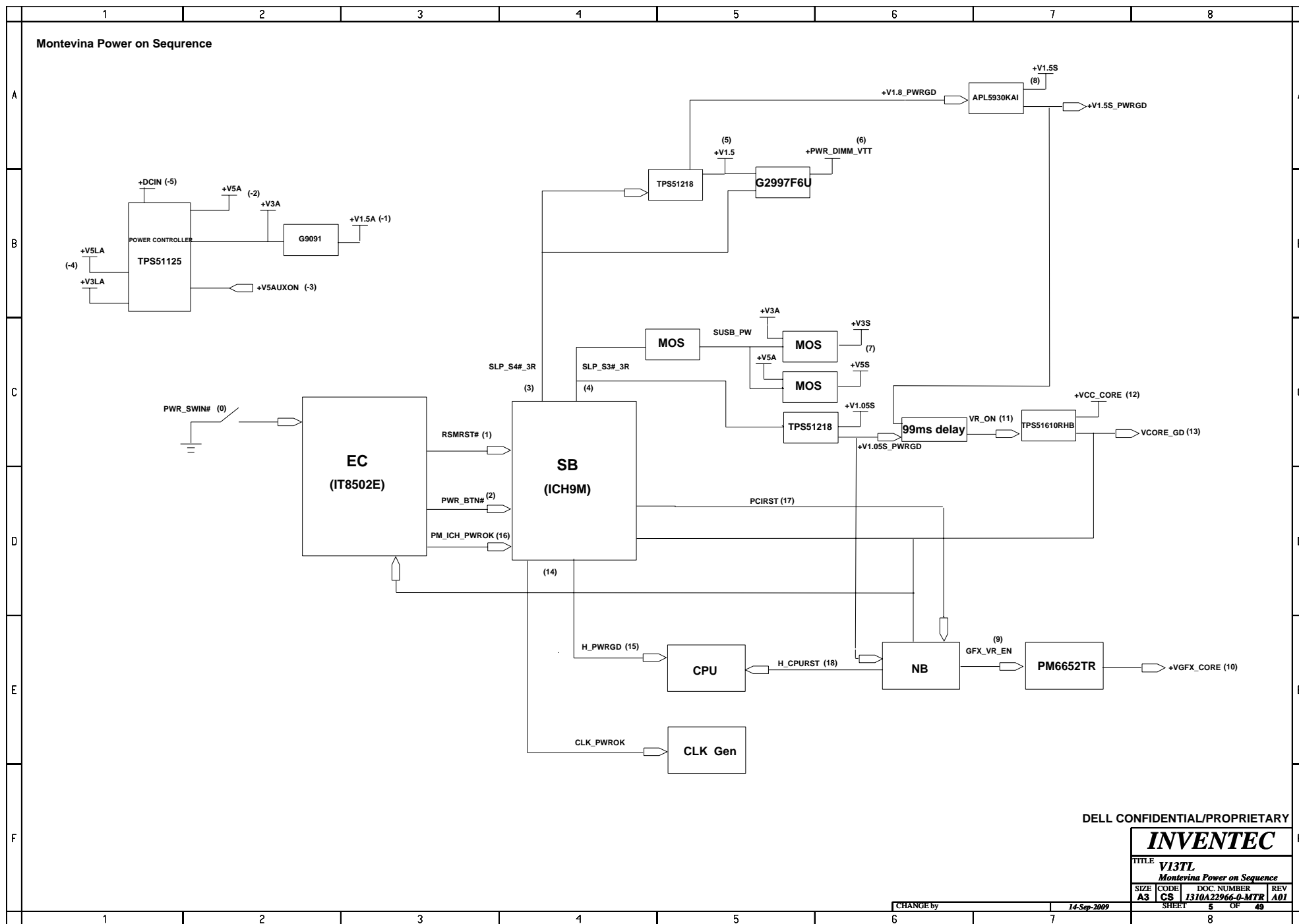


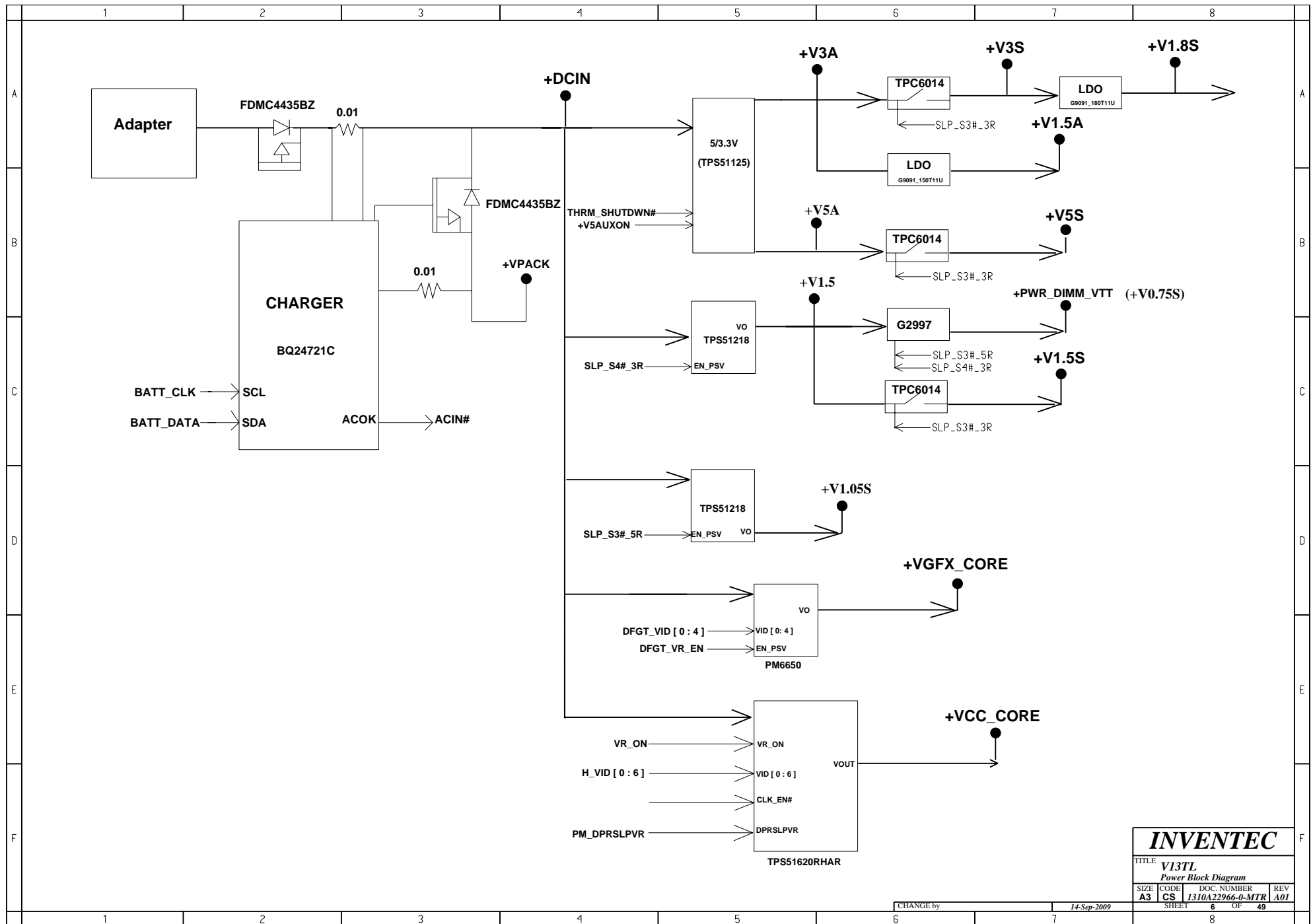


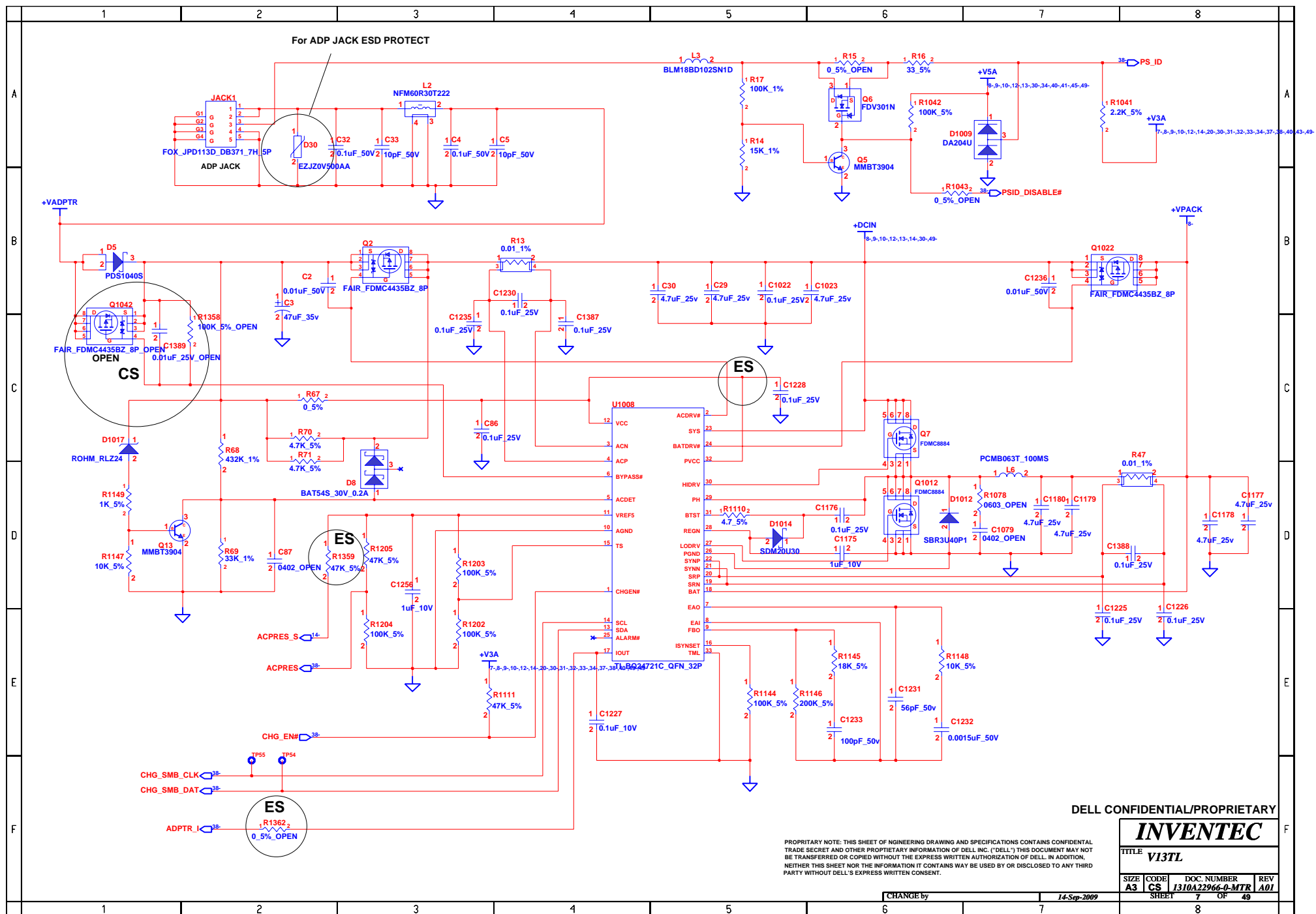
INVENTEC

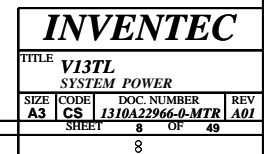
TITLE
V13TL

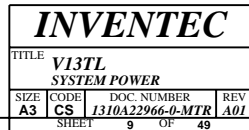
SIZE A3	CODE CS	DOC. NUMBER I310A22966-0-MTR A01	REV 4
SHEET		OF 49	

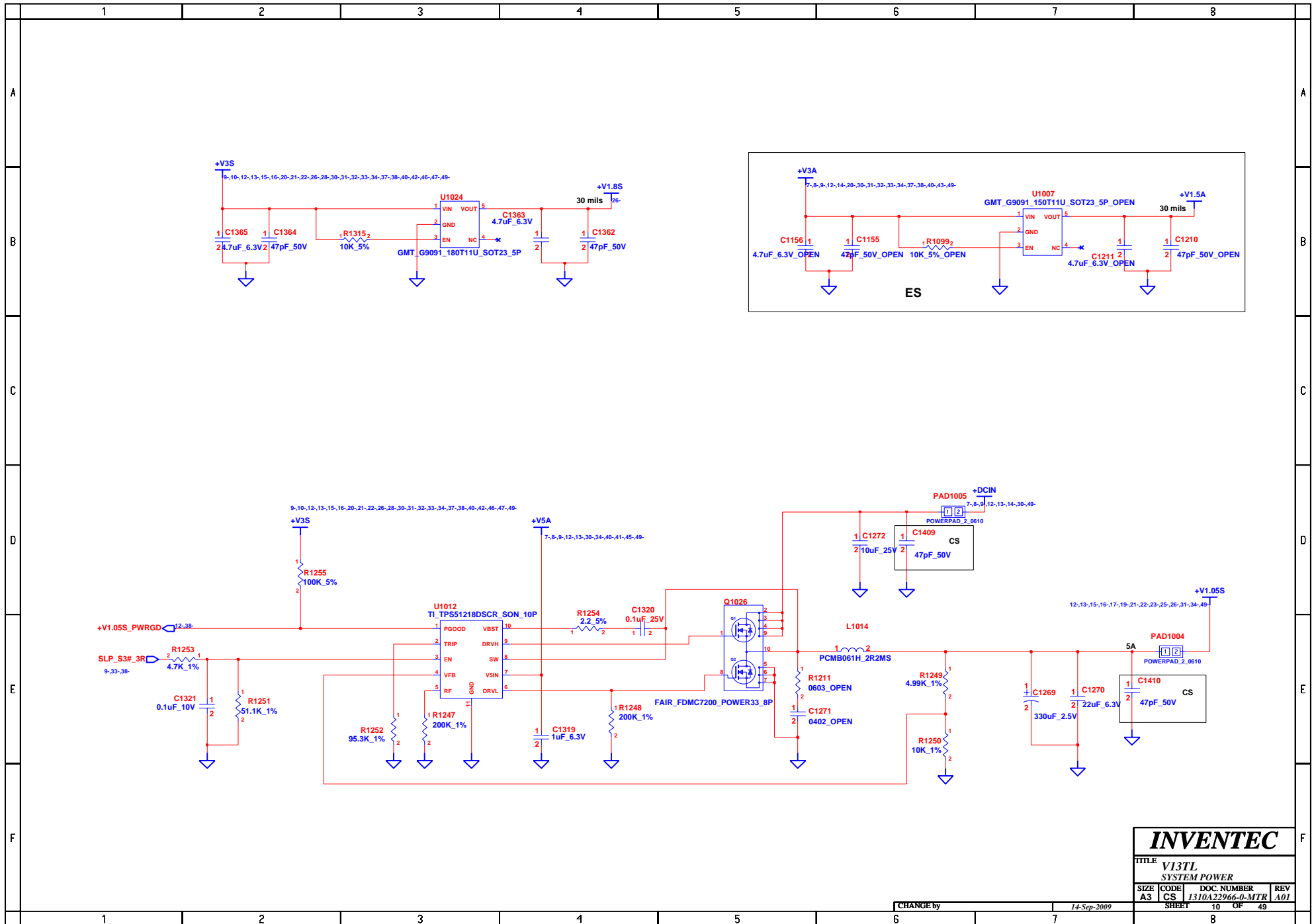


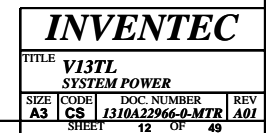


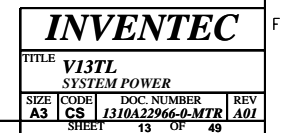


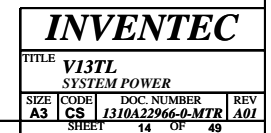


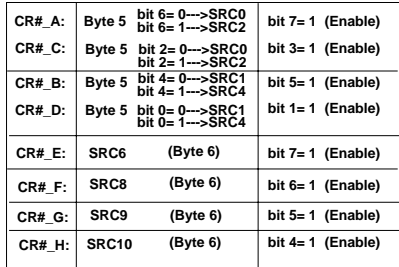




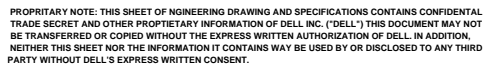


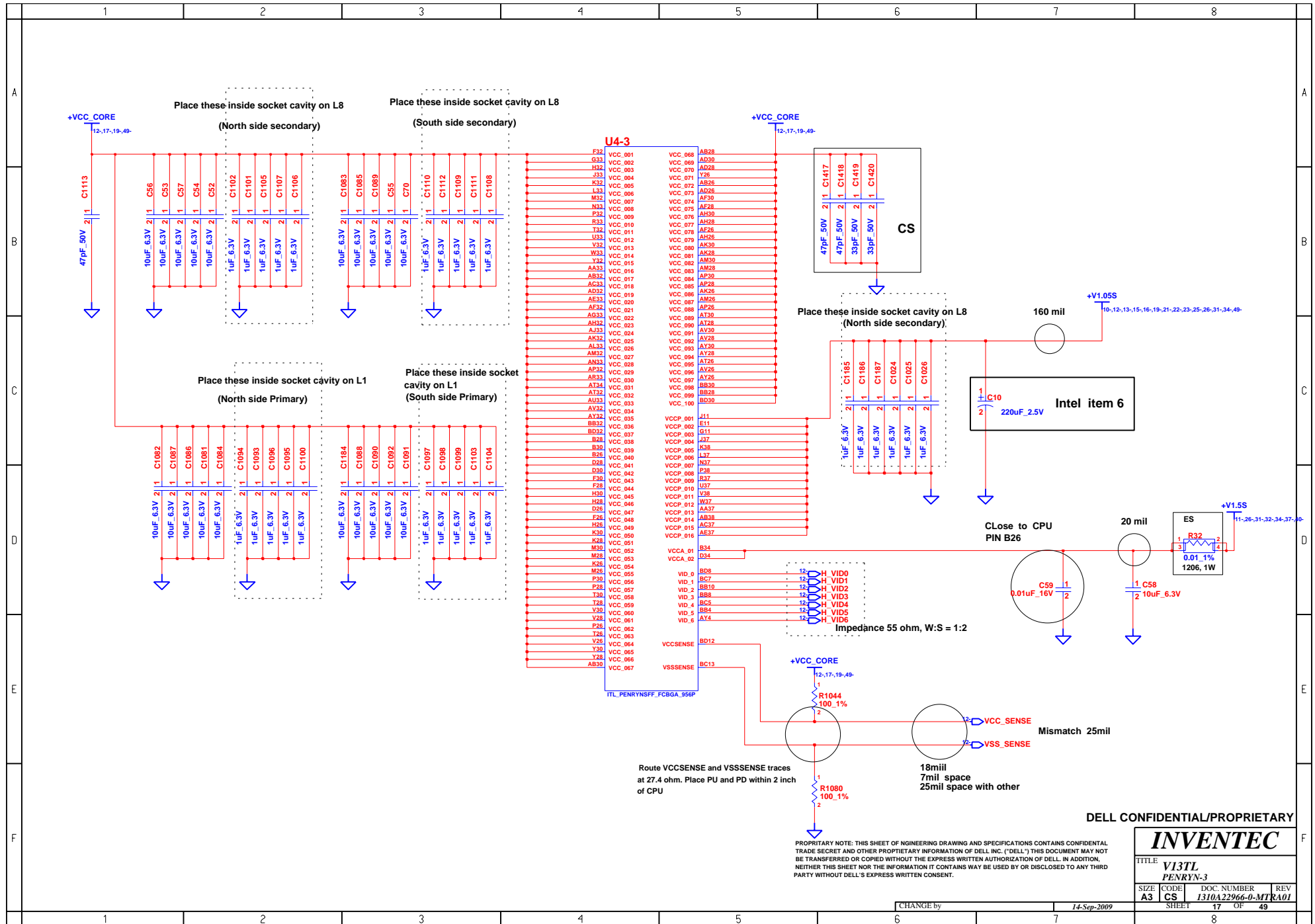




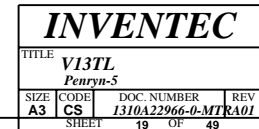


TITLE			
V13TL CLOCK_GENERATOR			
SIZE	CODE	DOC. NUMBER	REV
A3	CS	1310A22966-0-MT	RA01
SHEET		15	OF 49

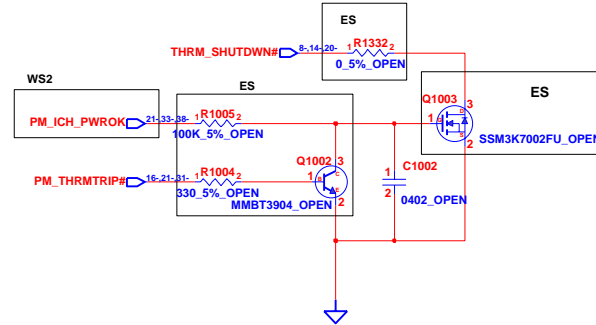
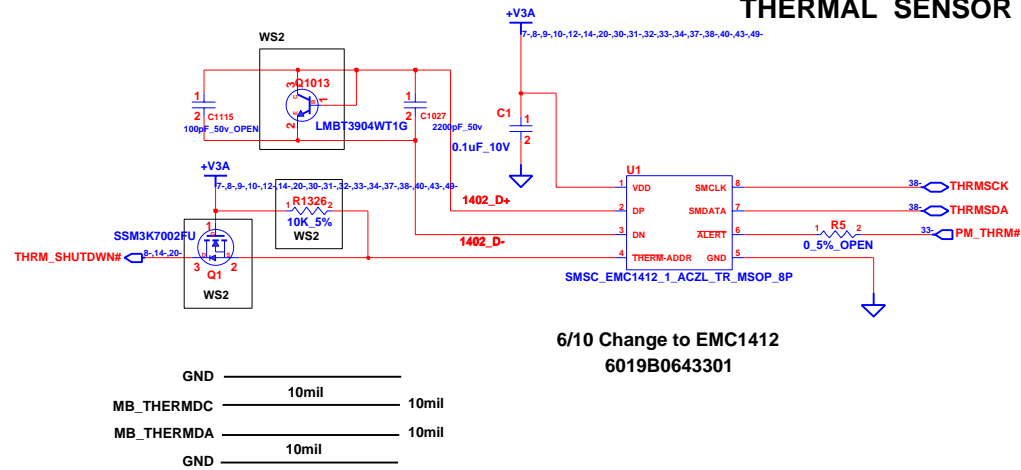




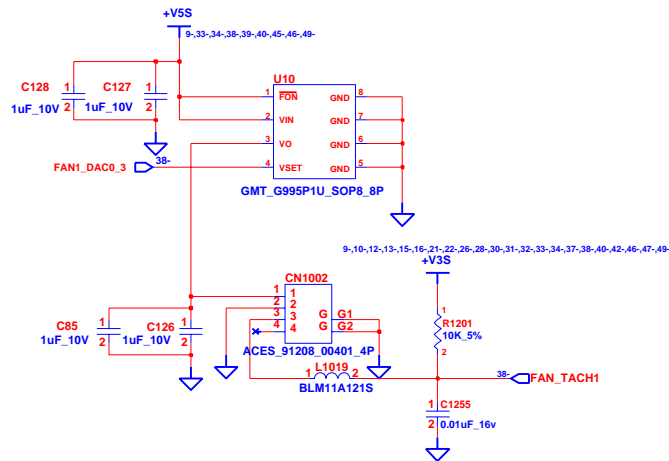
DELL CONFIDENTIAL/PROPRIETARY



THERMAL SENSOR



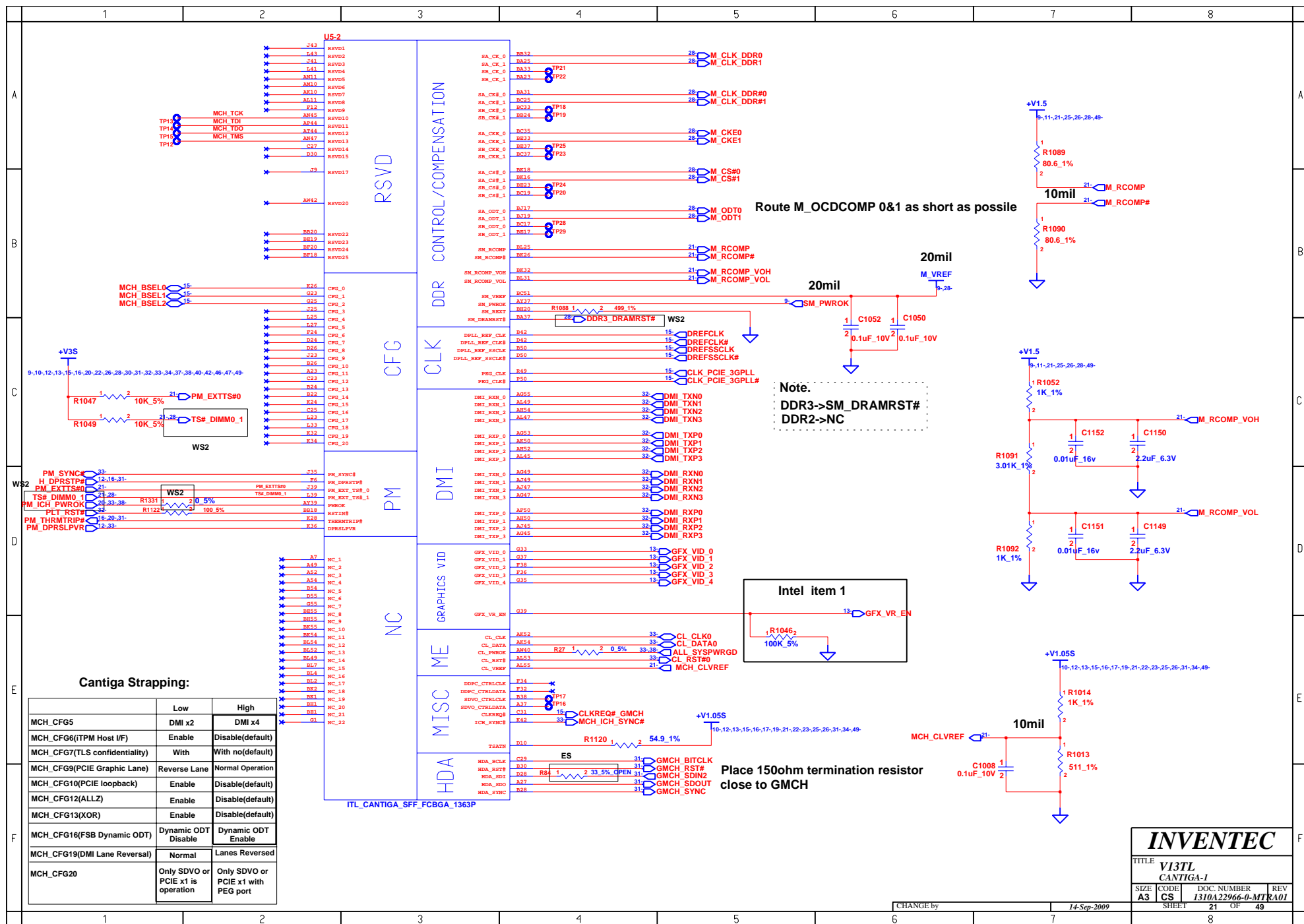
Fan control



DELL CONFIDENTIAL/PROPRIETARY

PROPRIETARY NOTE: THIS SHEET OF ENGINEERING DRAWING AND SPECIFICATIONS CONTAINS CONFIDENTIAL TRADE SECRET AND OTHER PROPRIETARY INFORMATION OF DELL INC. ("DELL") THIS DOCUMENT MAY NOT BE TRANSFERRED OR COPIED WITHOUT THE EXPRESS WRITTEN AUTHORIZATION OF DELL. IN ADDITION, NEITHER THIS SHEET NOR THE INFORMATION IT CONTAINS MAY BE USED BY OR DISCLOSED TO ANY THIRD PARTY WITHOUT DELL'S EXPRESS WRITTEN CONSENT.

INVENTEC			
TITLE V13TL THERMAL & FAN CONTROLLER			
SIZE A3	CODE CS	DOC. NUMBER 1310A22966-0-MTR	REV A01
CHANGE by		14-Sep-2009	
SHEET		20 OF 49	

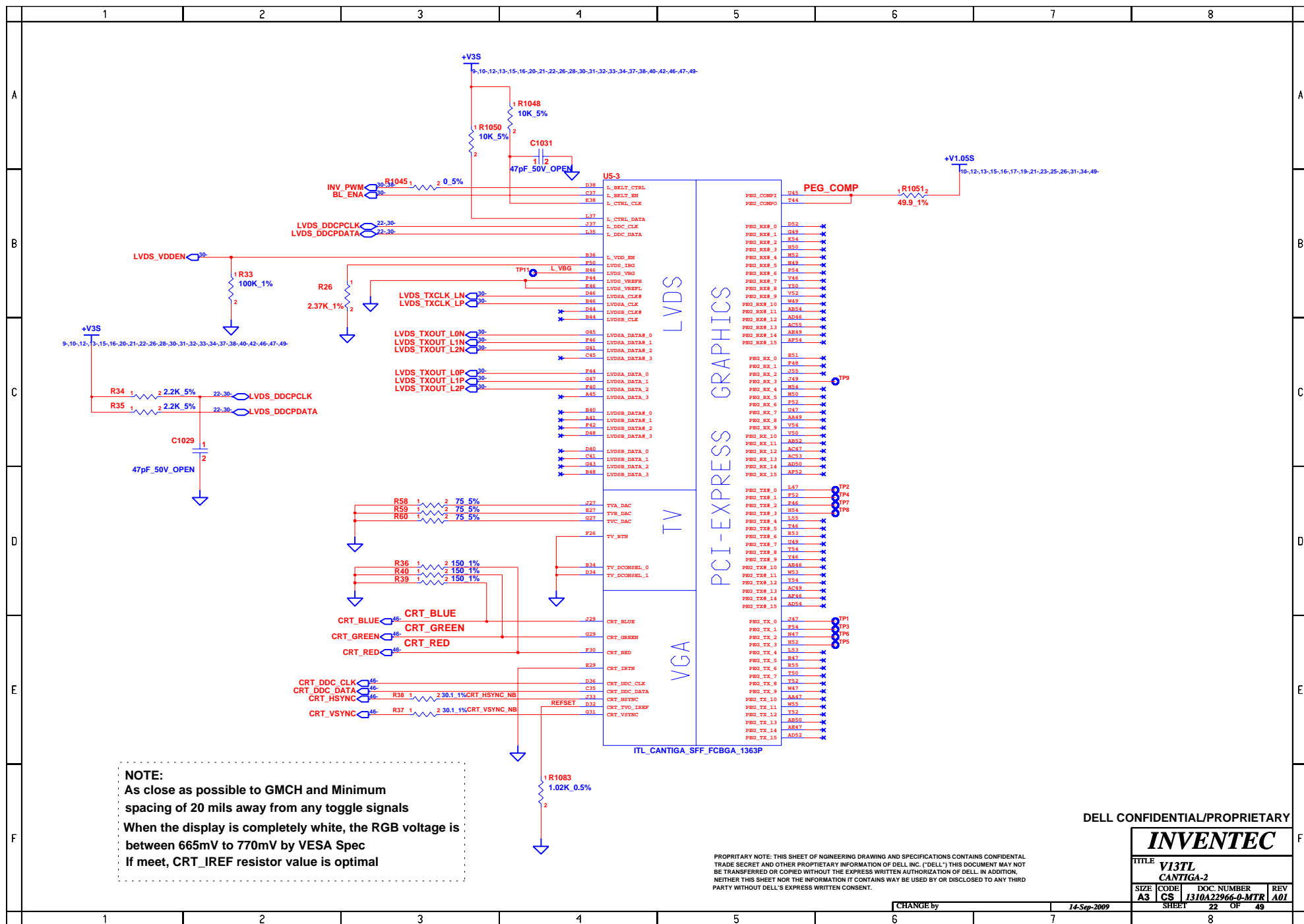


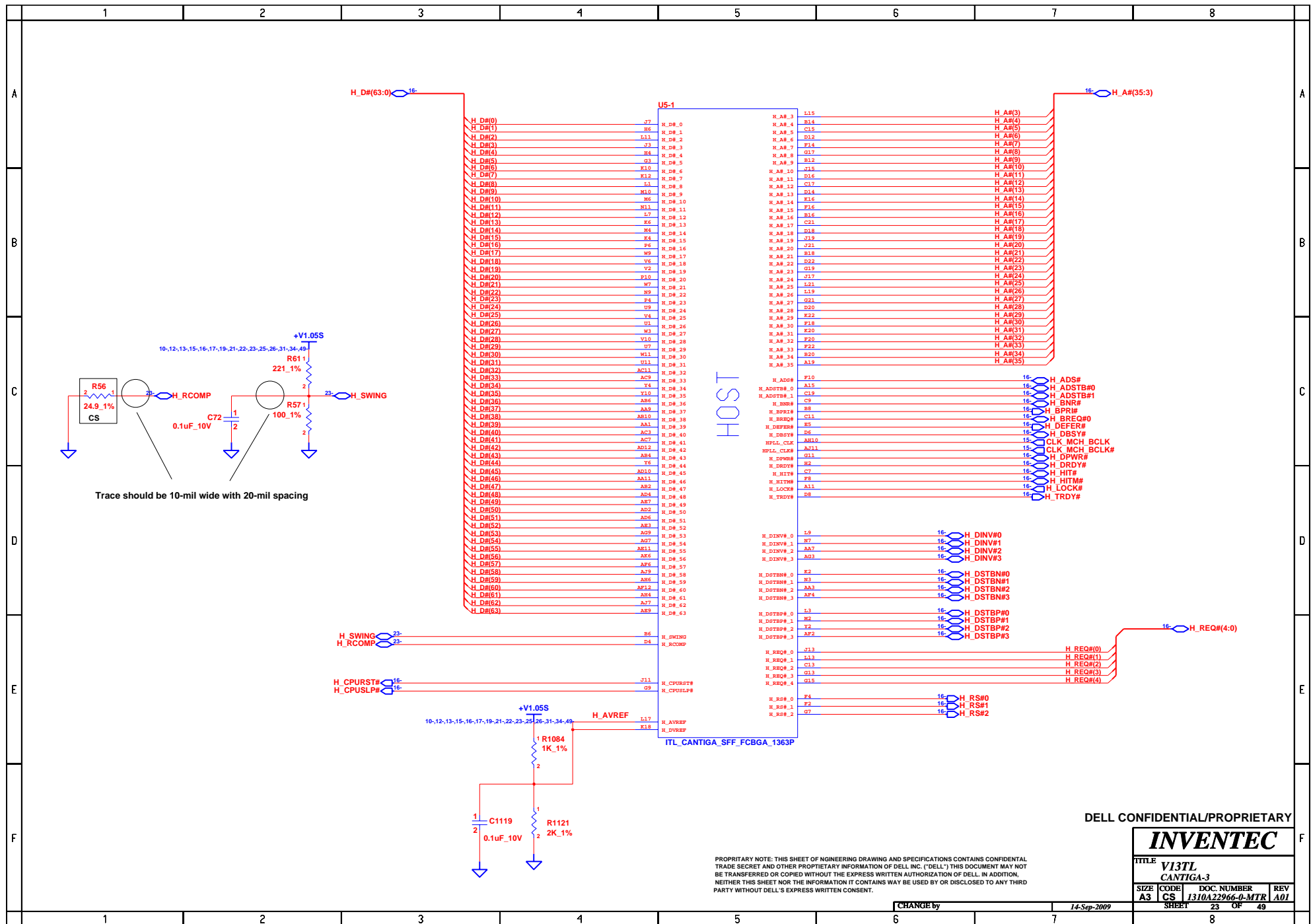
INVENTEC

TITLE
V13TL
CANTIGA-1

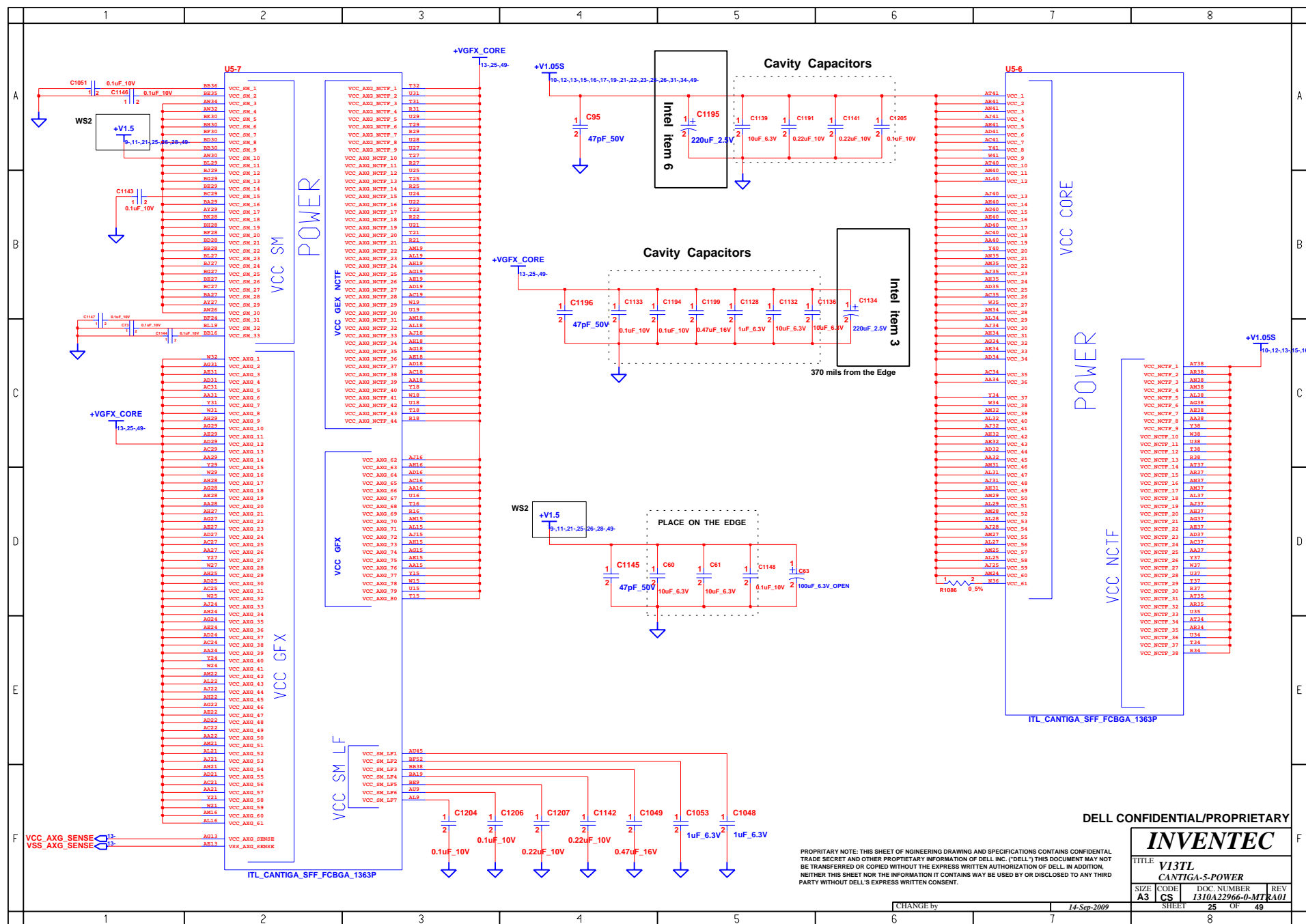
SIZE CODE DOC. NUMBER REV
A3 CS 1310A22966-0-MT RA01

SHEET 21 OF 49



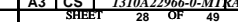








SIZE A3	CODE CS	DOC. NUMBER 1310A22966-0-MTRA	R 1
SHEET		27	OF 49



	1	2	3	4	5	6	7	8	
A									A
B									B
C									C
D									D
E									E
F									F
	1	2	3	4	5	6	7	8	

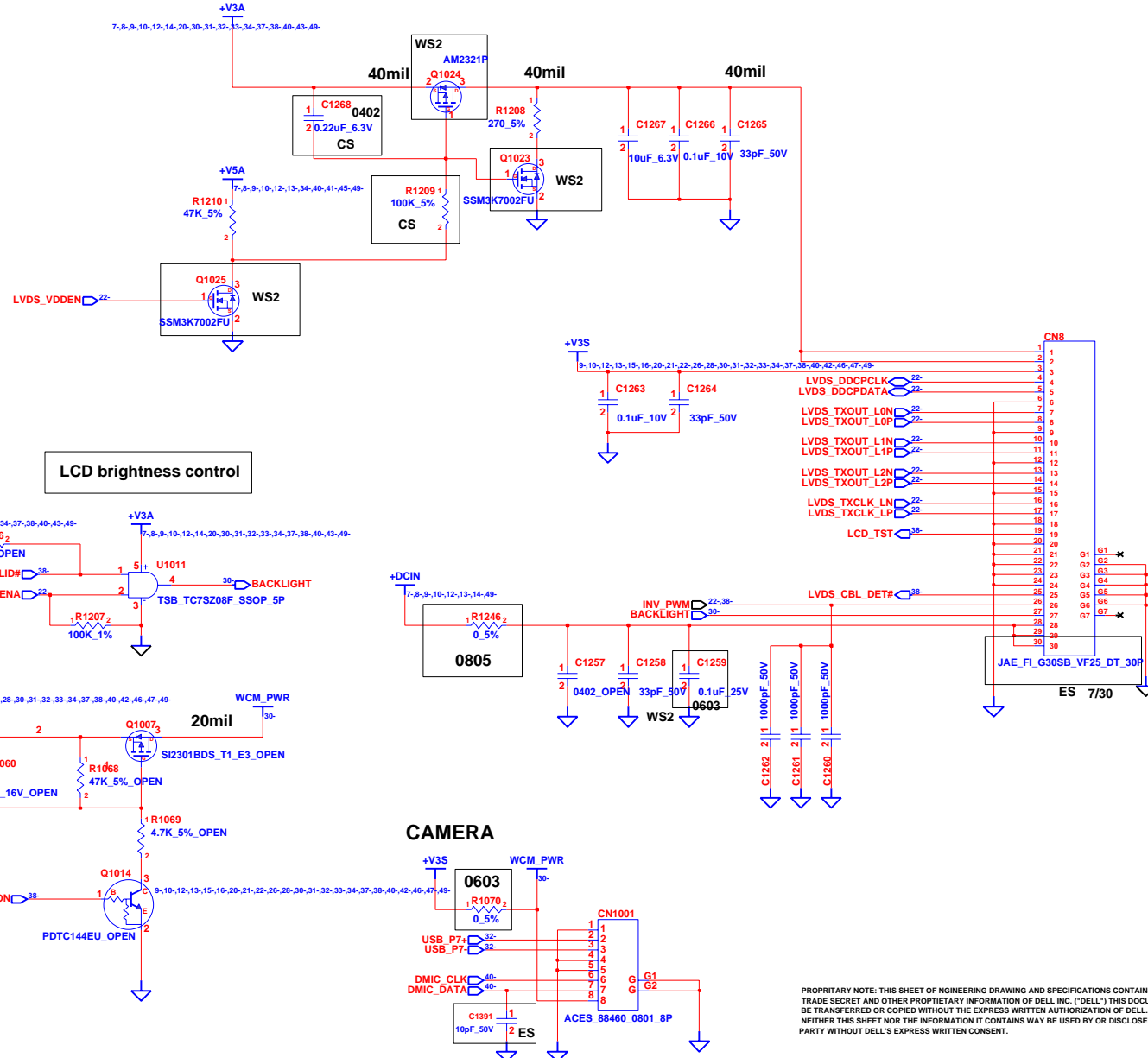
WS2 ->DDR3

BLANK

INVENTEC			
TITLE V13TL DDR DAMPING			
SIZE A3	CODE CS	DOC. NUMBER 1310A22966-0-MTR	REV A01
SHEET 29		OF 49	

CHANGE by 14-Sep-2009

LVDS Interface



DELL CONFIDENTIAL/PROPRIETARY

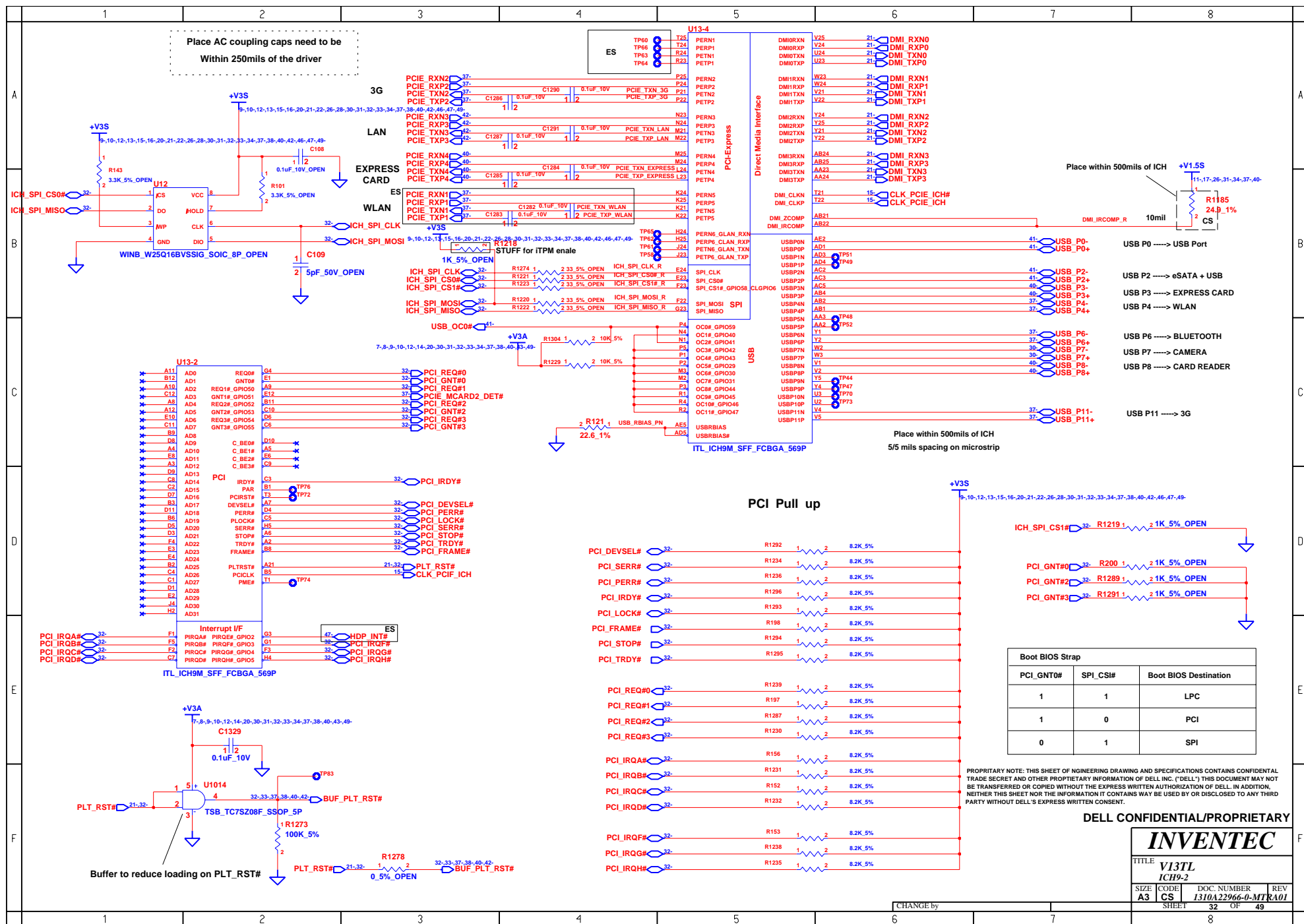
INVENTEC

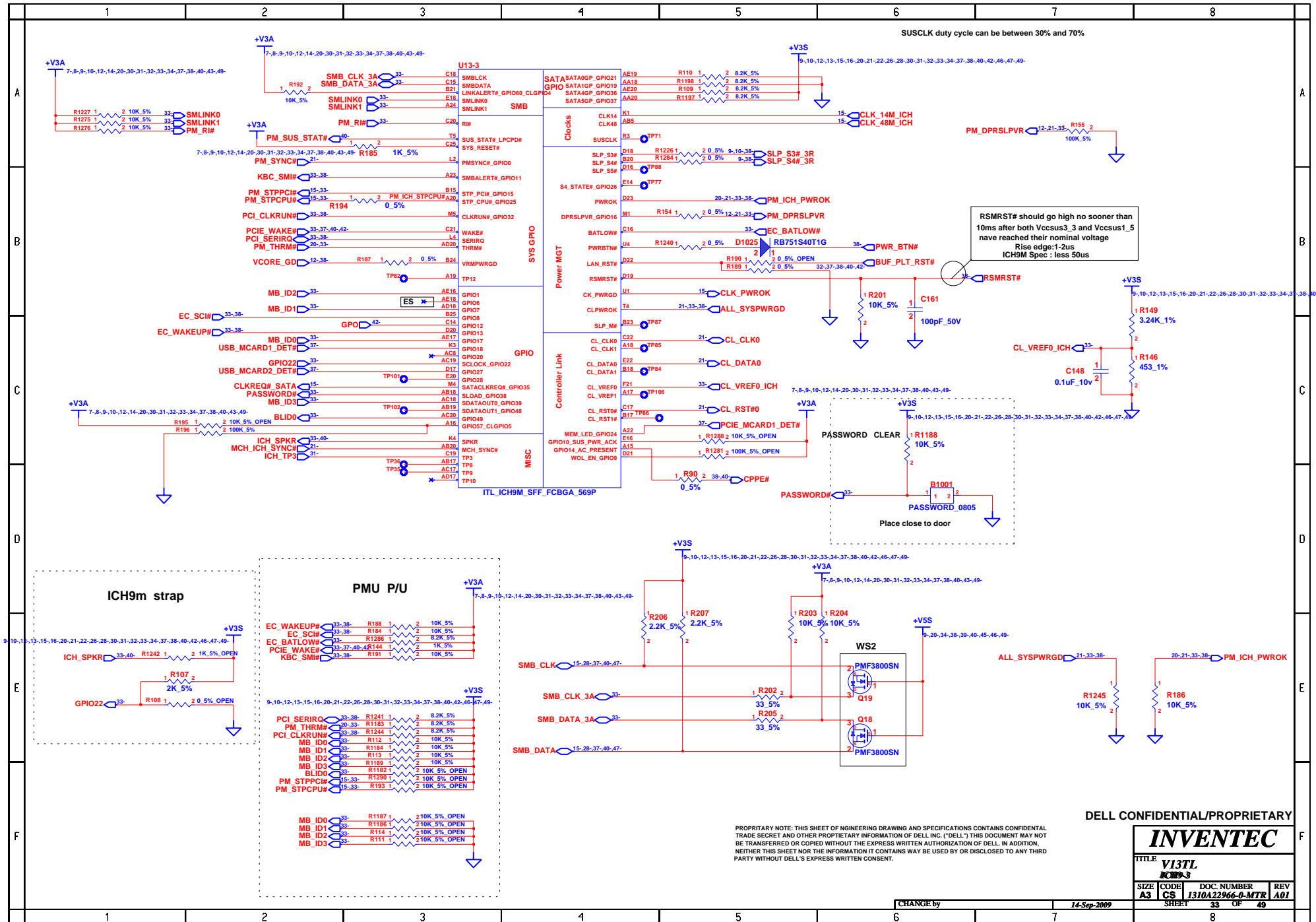
TITLE V13TL LCM CONN			
SIZE A3	CODE CS	DOC. NUMBER 1310A22966-0-MTR	REV RA01
SHEET 30		OF 49	

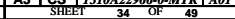
PROPRIETARY NOTE: THIS SHEET OF ENGINEERING DRAWING AND SPECIFICATIONS CONTAINS CONFIDENTIAL TRADE SECRET AND OTHER PROPRIETARY INFORMATION OF DELL INC. (DELL) THIS DOCUMENT MAY NOT BE TRANSFERRED OR COPIED WITHOUT THE EXPRESS WRITTEN AUTHORIZATION OF DELL. IN ADDITION, NEITHER THIS SHEET NOR THE INFORMATION IT CONTAINS MAY BE USED BY OR DISCLOSED TO ANY THIRD PARTY WITHOUT DELL'S EXPRESS WRITTEN CONSENT.

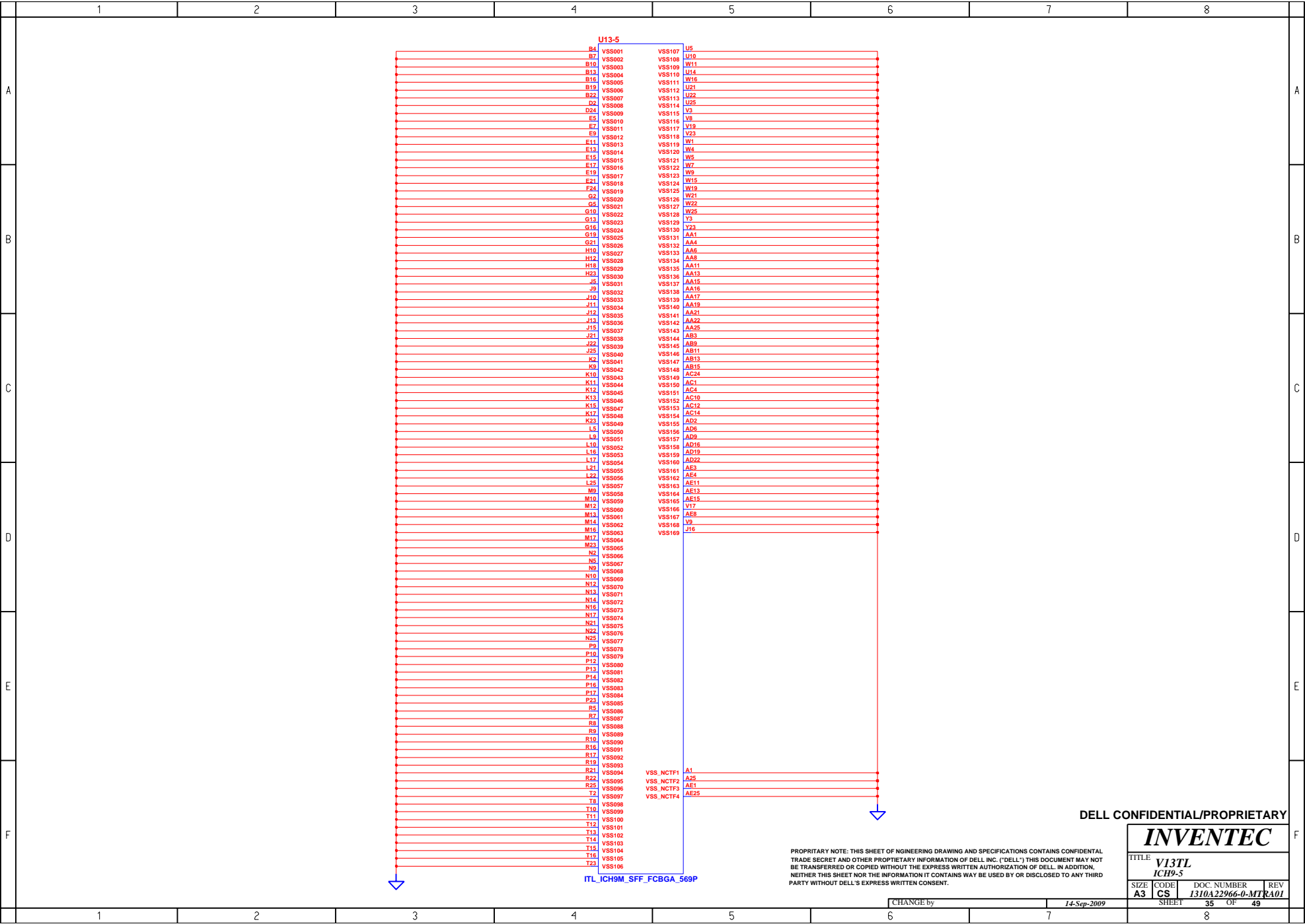
CHANGE by 14-Sep-2009









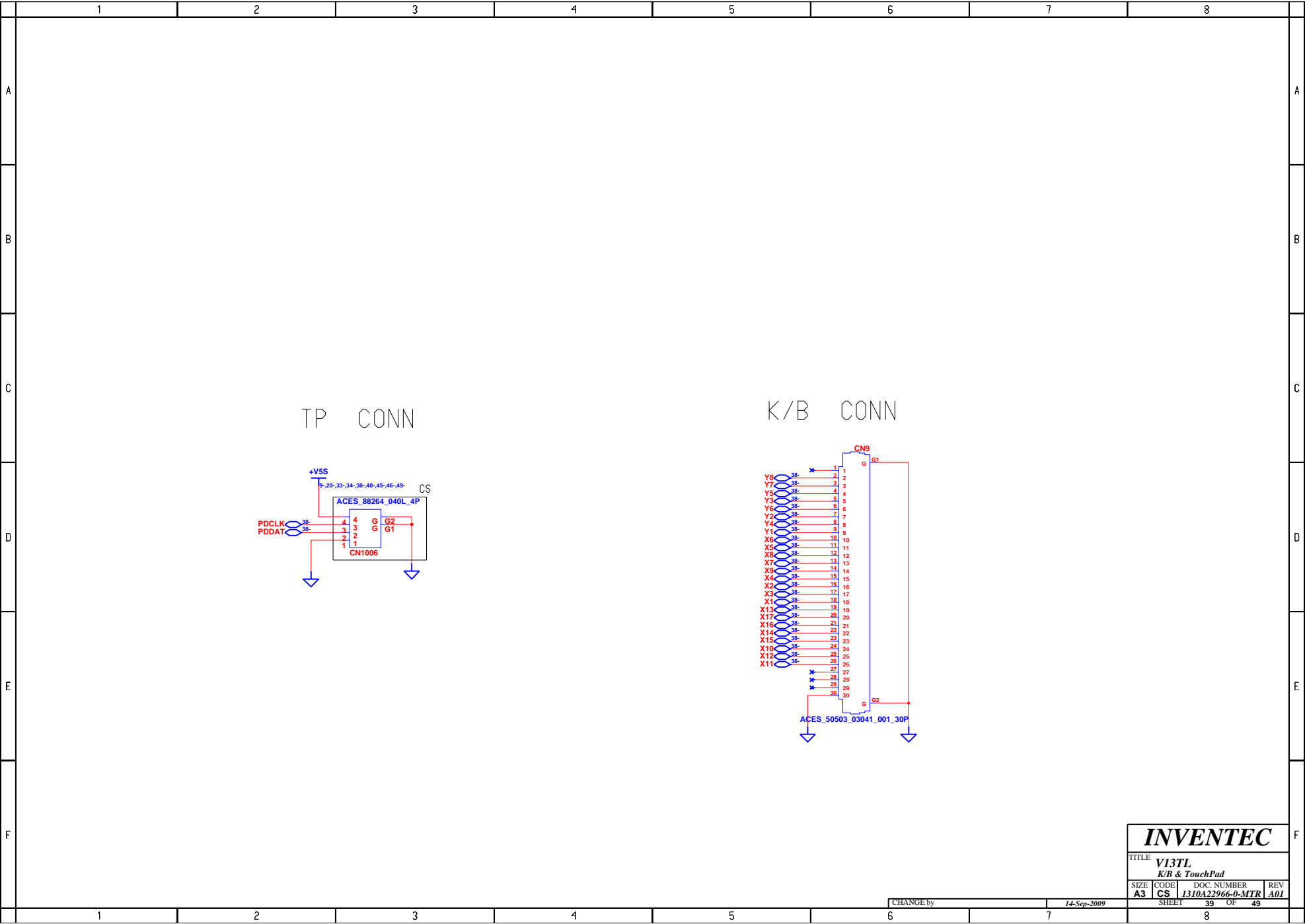


	1	2	3	4	5	6	7	8	
A	<div>BLANK</div>								A
B									B
C									C
D									D
E									E
F									F
	1	2	3	4	5	6	7	8	

INVENTEC			
TITLE V13TL HDD CONN			
SIZE A3	CODE CS	DOC. NUMBER 1310A22966-0-MTR	REV A01
CHANGE by		14-Sep-2009	
SHEET		36	OF 49



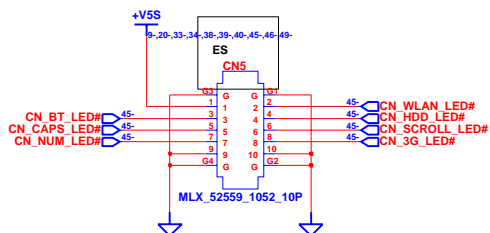




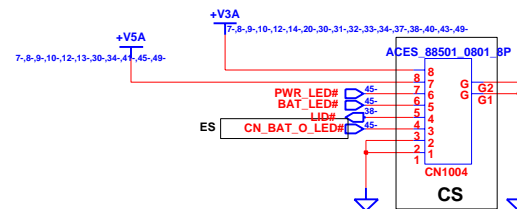
INVENTEC			
TITLE V13TL			
K/B & TouchPad			
SIZE A3	CODE CS	DOC. NUMBER 1310A22966-0-MTR	REV A01
SHEET 39		OF 49	

CHANGE by 14-Sep-2009

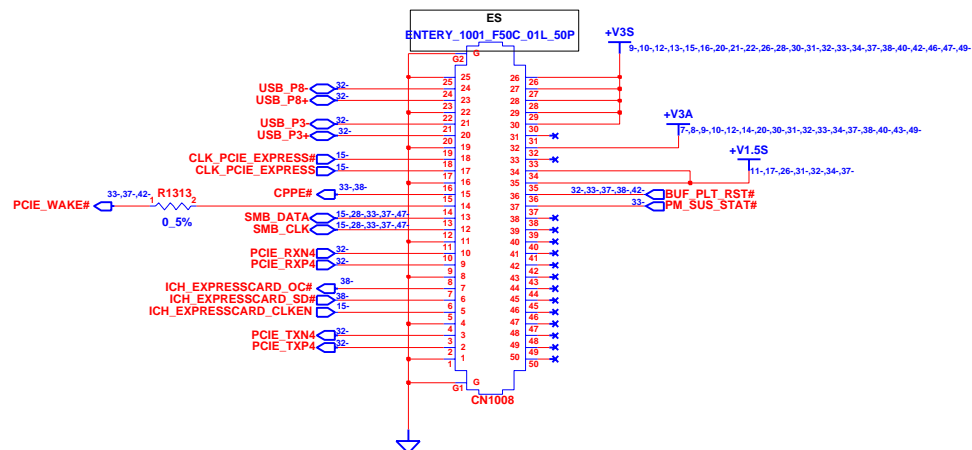
Conn to LED BOARD



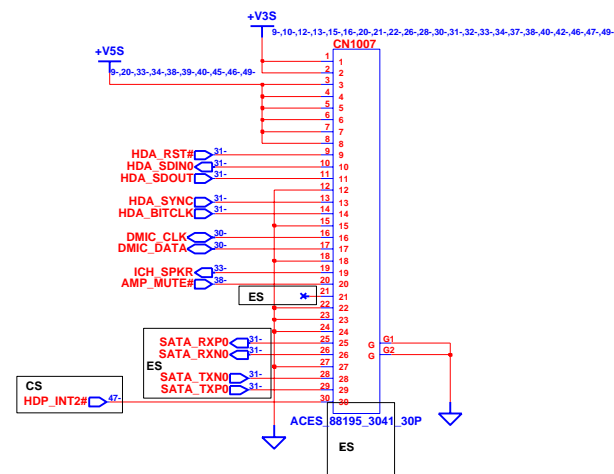
Conn to HALL SENSOR BOARD



Conn to CR BOARD



Conn to AUDIO BOARD

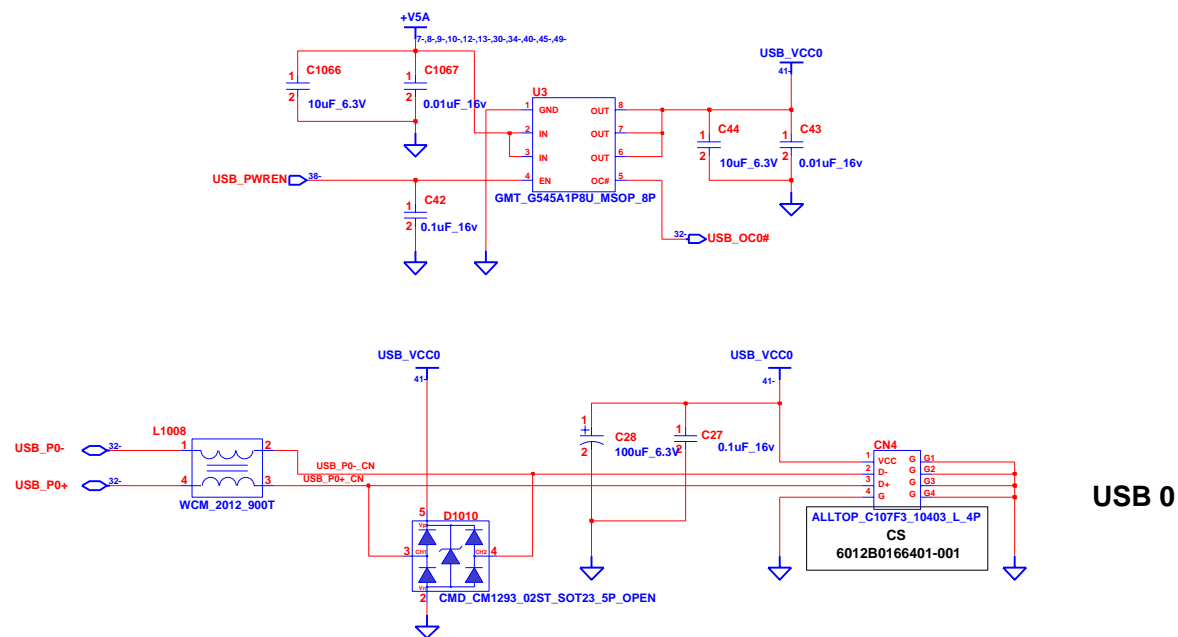


INVENTEC

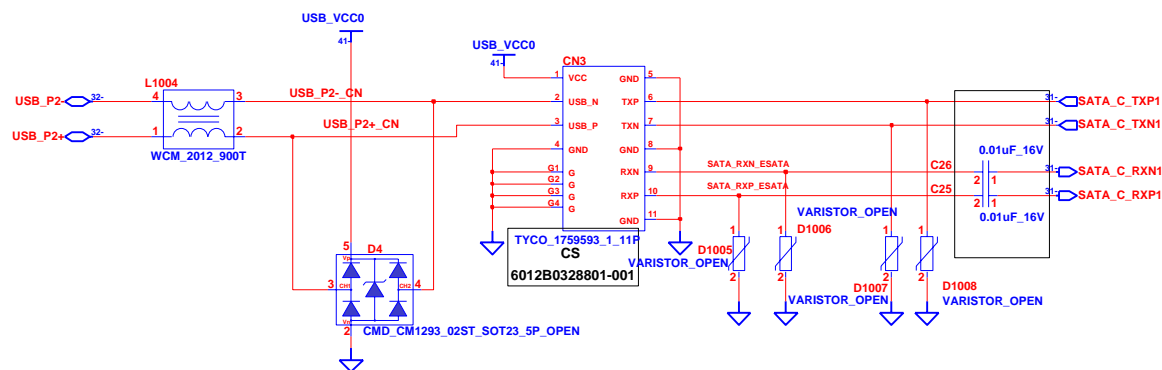
TITLE V13TL IO Connector			
SIZE A3	CODE CS	DOC. NUMBER 1310A22966-0-MTR	REV A01
SHEET		40	OF 49

CHANGE by 14-Sep-2009

USB & eSATA



eSATA & USB combo

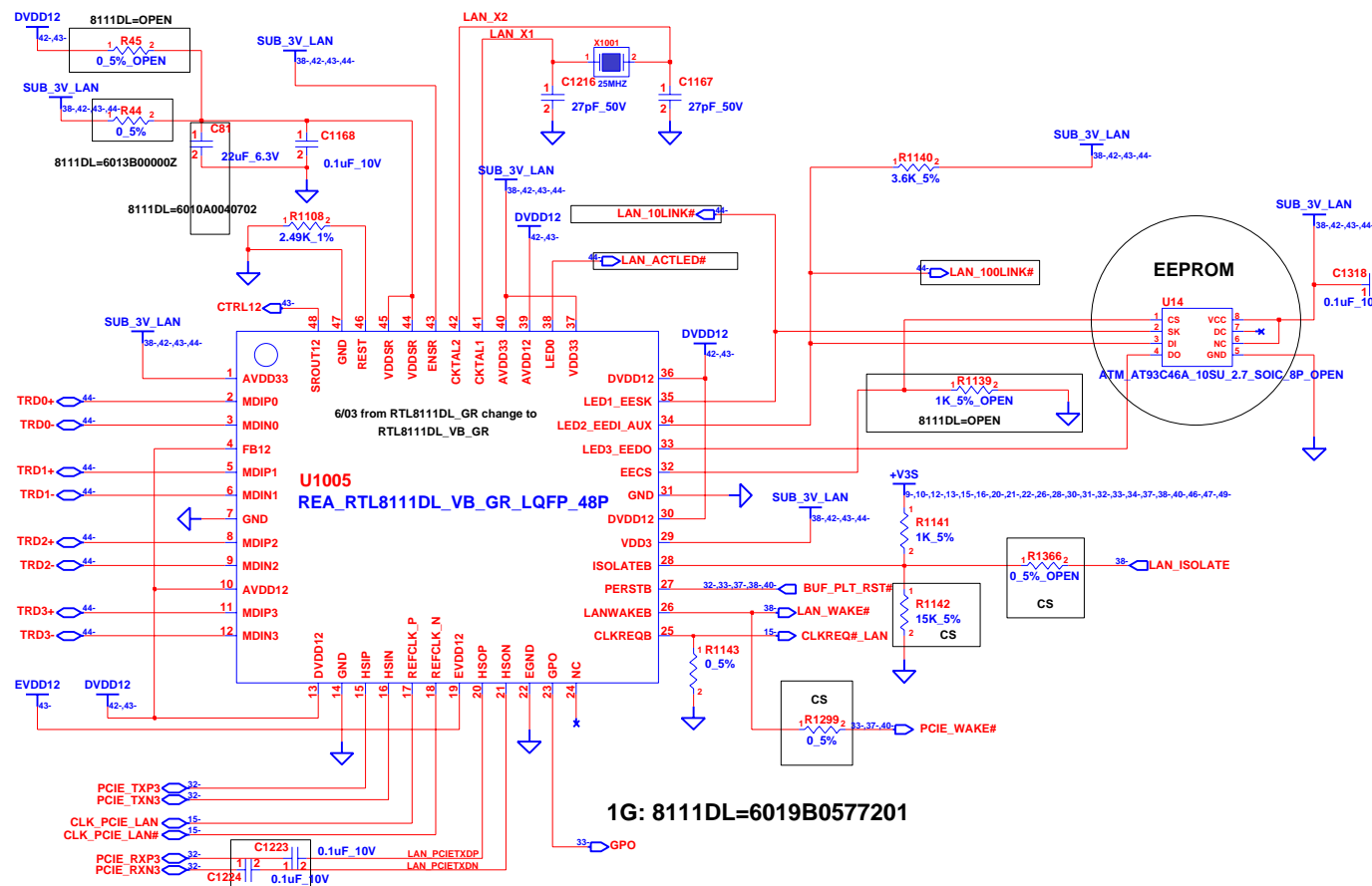


INVENTEC

TITLE			
V13TL			
USB & eSATA			
SIZE	CODE	DOC. NUMBER	REV
A3	CS	1310A22966-0-MTR	A01
SHEET		41	OF 49

CHANGE by 14-Sep-2009

LAN CONTROLLER



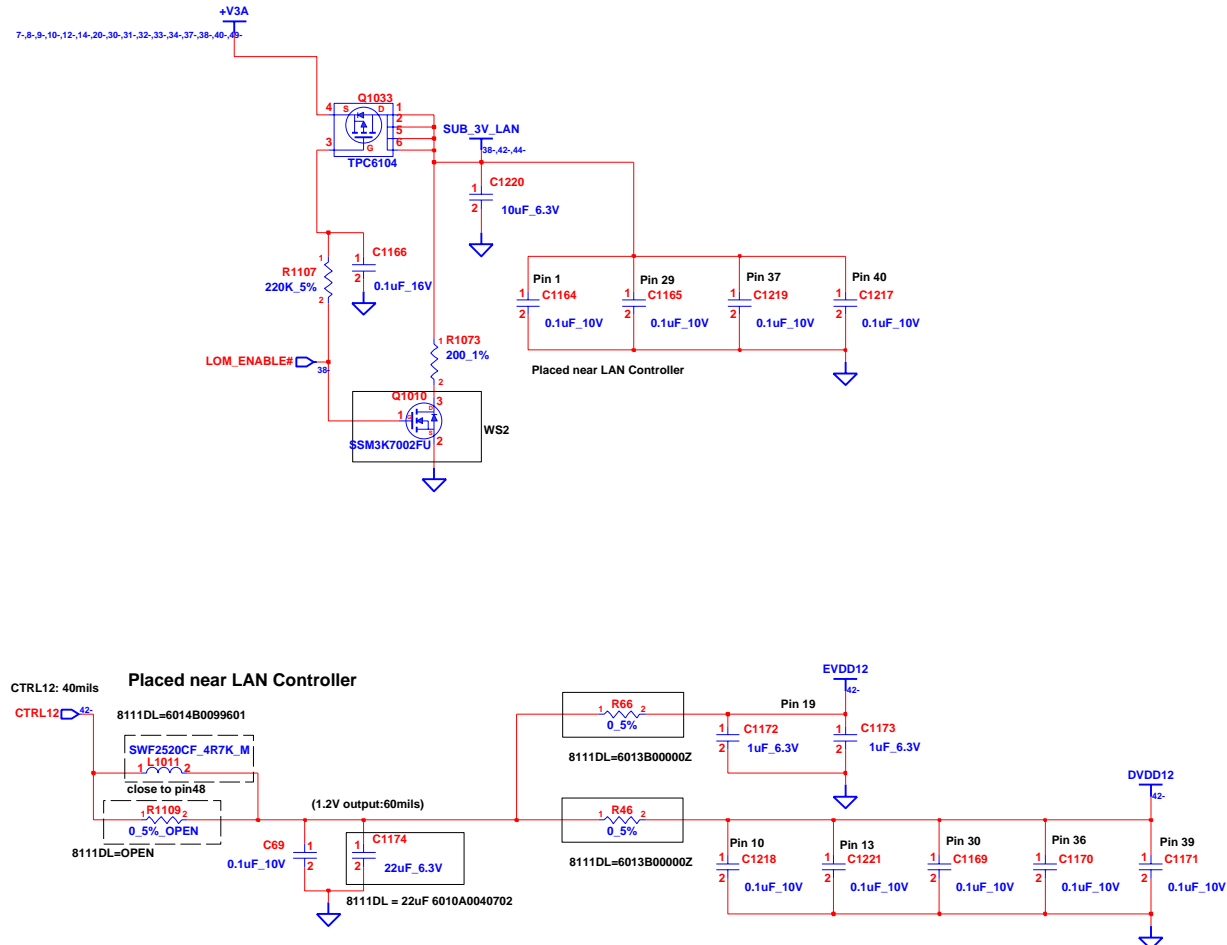
CLOSE TO LAN CONTROLLER

INVENTEC

TITLE V13TL LAN_PHY			
SIZE A3	CODE CS	DOC. NUMBER 1310A22966-0-MTR	REV A01
SHEET		42	OF 49

CHANGE by 14-Sep-2009

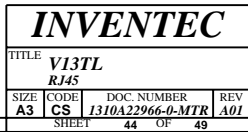
LAN POWER



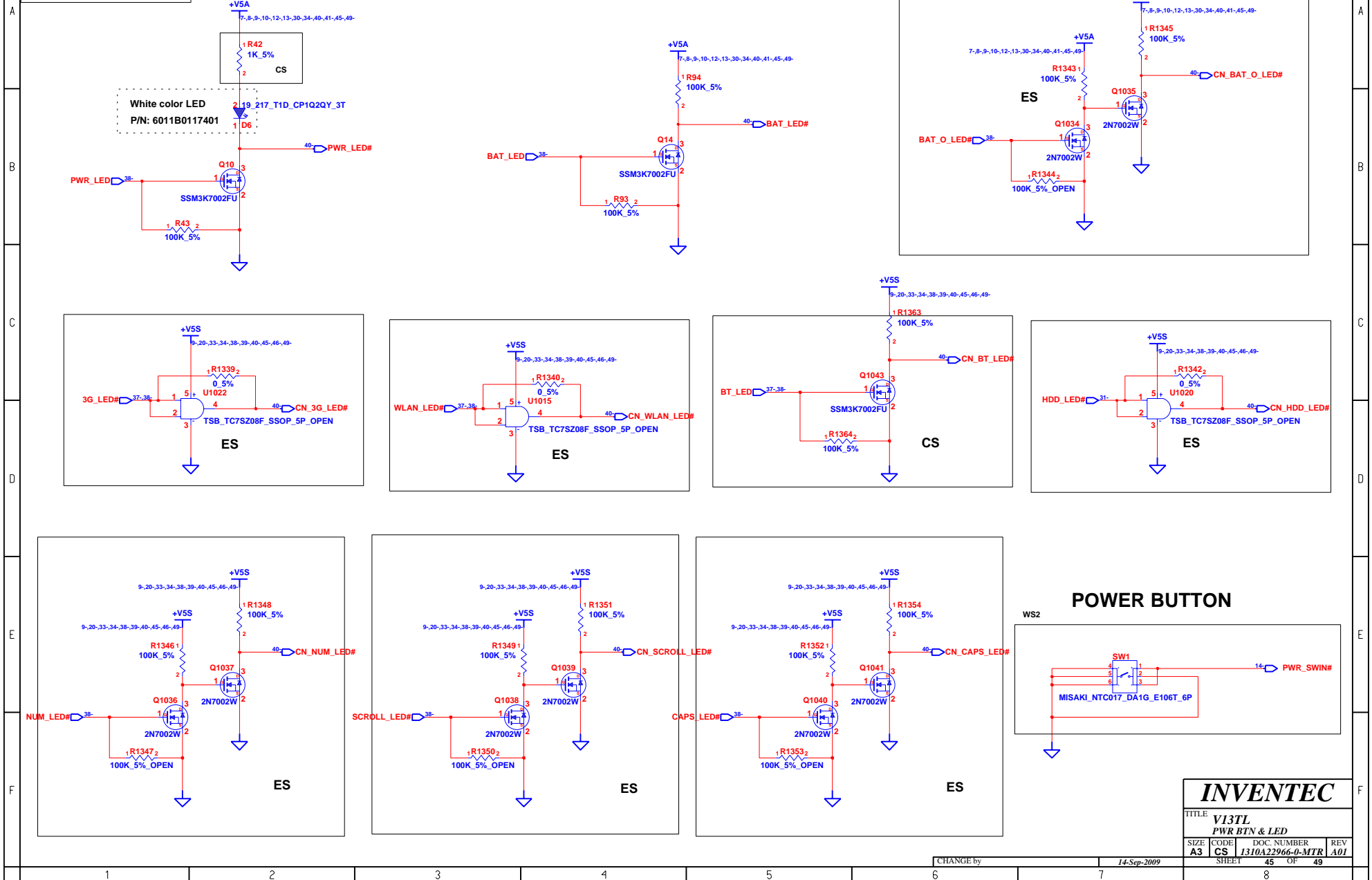
INVENTEC

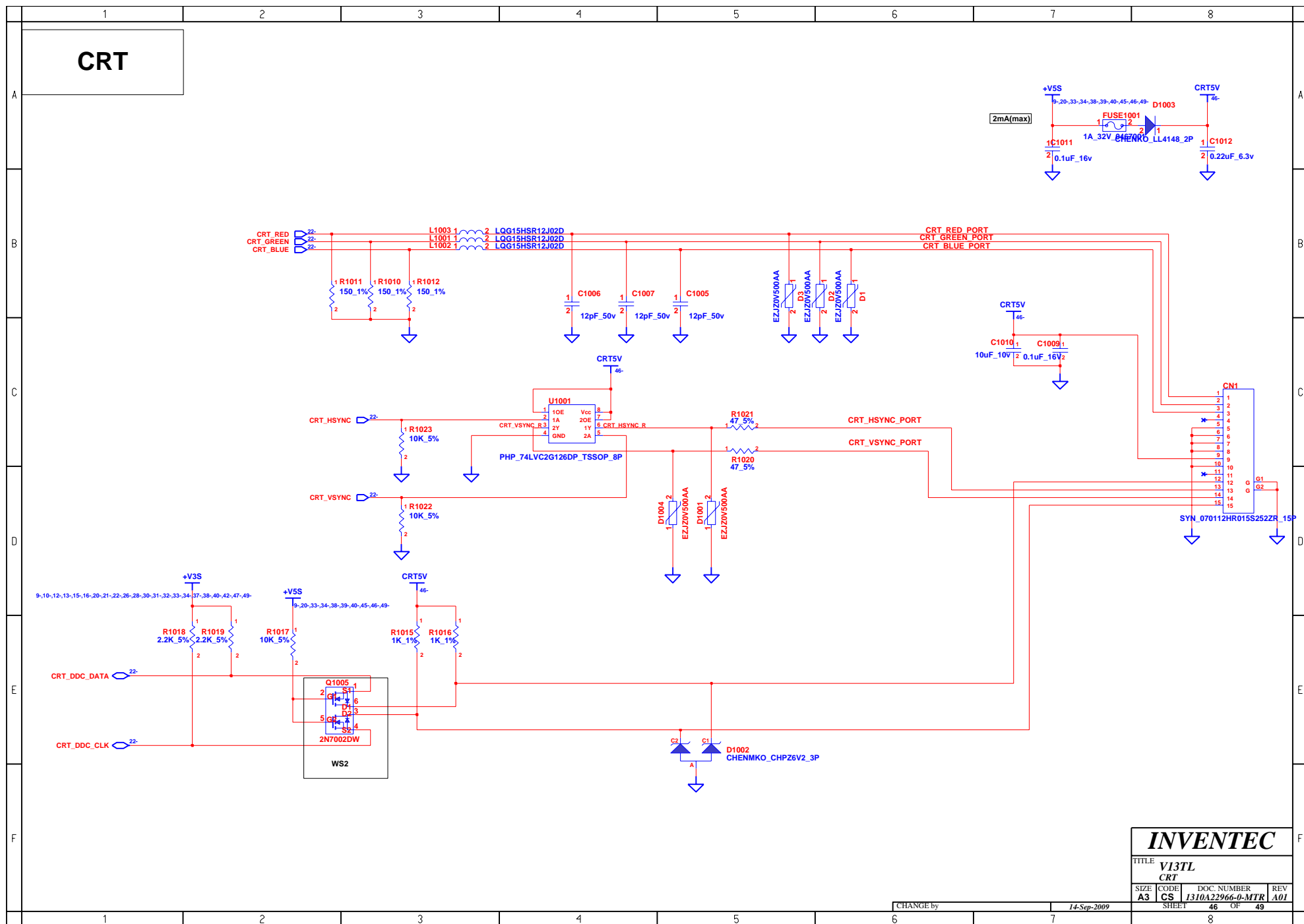
TITLE V13TL LAN POWER			
SIZE A3	CODE CS	DOC. NUMBER 1310A22966-0-MTR	REV A01
SHEET		43	OF 49

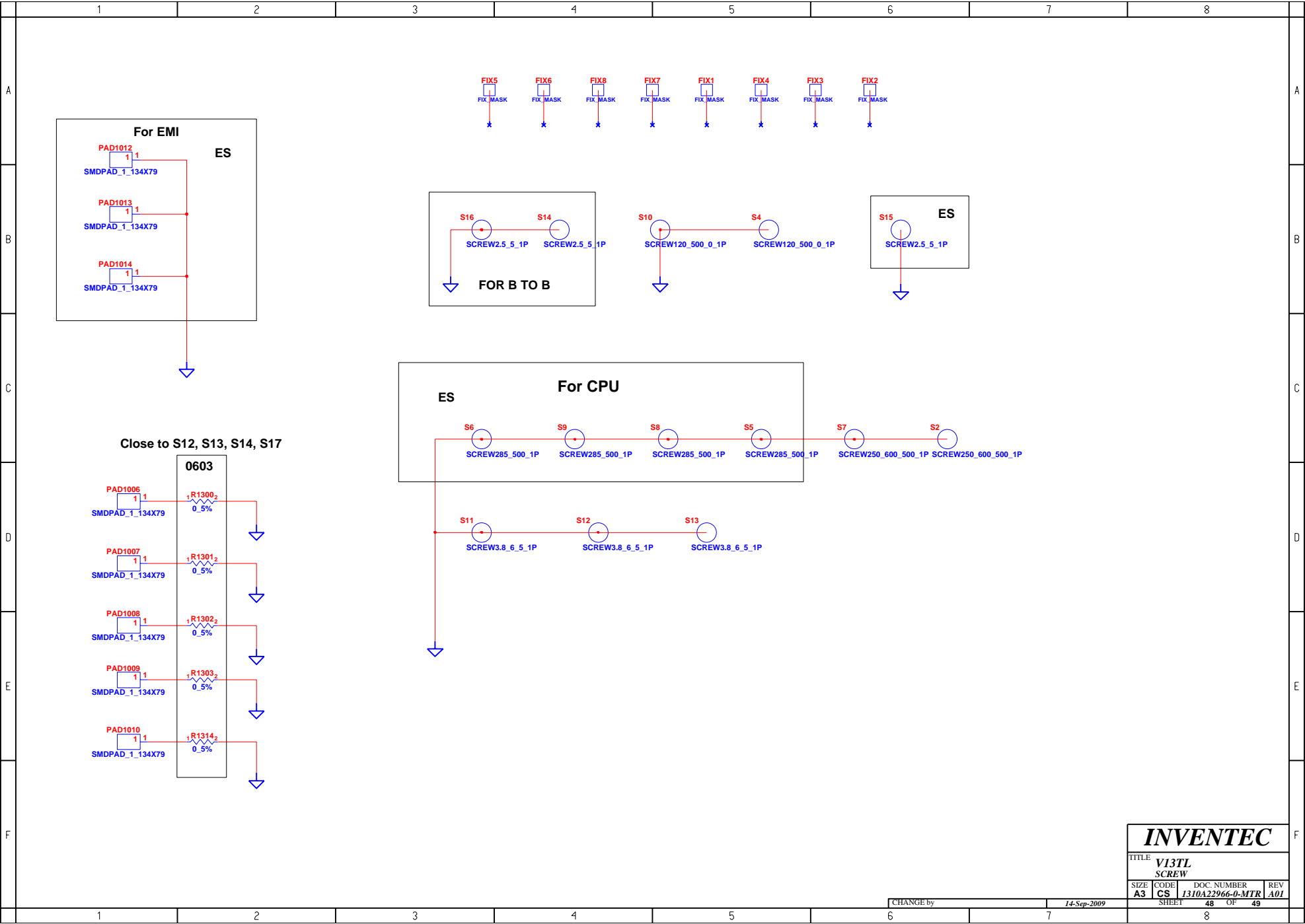
CHANGE by 14-Sep-2009



PWR BTN & LED







INVENTEC

TITLE V13TL SCREW			
SIZE A3	CODE CS	DOC. NUMBER 1310A22966-0-MTR	REV A01
SHEET		48	OF 49

CHANGE by 14-Sep-2009

